



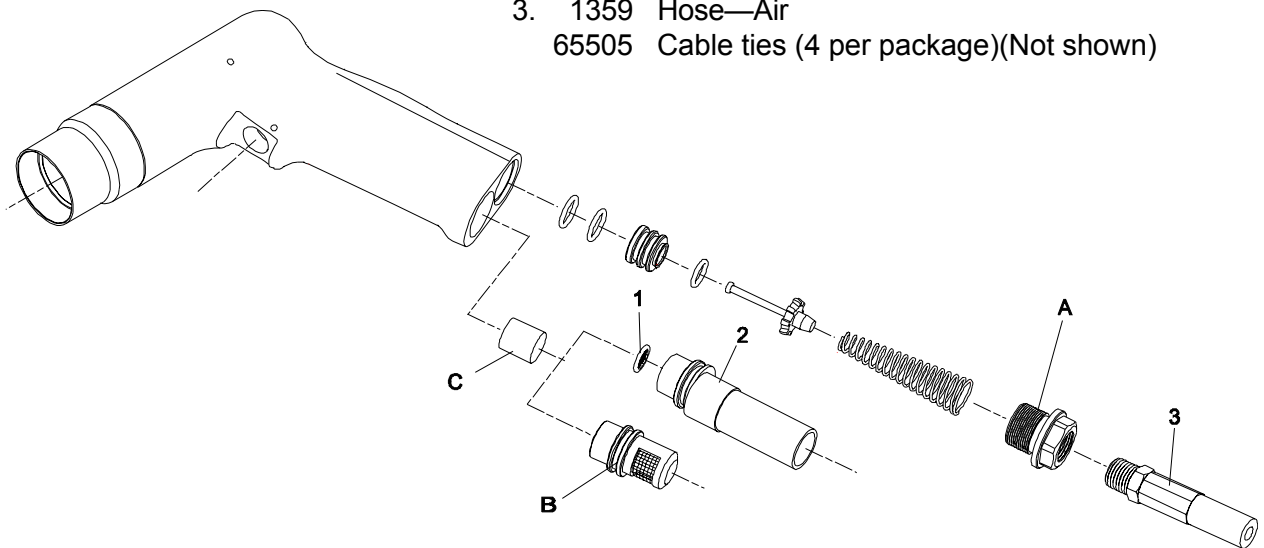
INSTRUCTIONS FOR 3301 REMOTE EXHAUST KIT (#1 SERIES OFFSET HOUSING)

KIT INCLUDES:

Fig. Part

No. No. Description

- | | | |
|----|-------|---------------------------------------|
| 1. | 30462 | Screen |
| 2. | 66537 | Assembly—Exhaust Hose |
| 3. | 1359 | Hose—Air |
| | 65505 | Cable ties (4 per package)(Not shown) |



INSTALLATION INSTRUCTION:

- Remove inlet adapter (A).
- Remove silencer assembly (B) and set aside.
- Lay screen (1) on top of silencing material (C) in handle.
- Install exhaust hose assembly (2) into housing.
- Install inlet adapter (A) back into housing and tighten to 20 ft lb.
- Install air hose (3) to inlet adapter (A).
- Exhaust hose and air hose can be attached together with four cable ties supplied.

SIouxTM
TOOLS INC.

2901 FLOYD BOULEVARD ■ PO BOX 507 ■ SIOUX CITY, IOWA 51102-0507 USA ■

Printed In U.S.A.